

# 'Greenspaces'

## Principle

Areas considered 'dominated by vegetation', per type or size

## Data from

From (local) governments,  
Urban Atlas (EU),  
or OpenStreetMap

## Scale

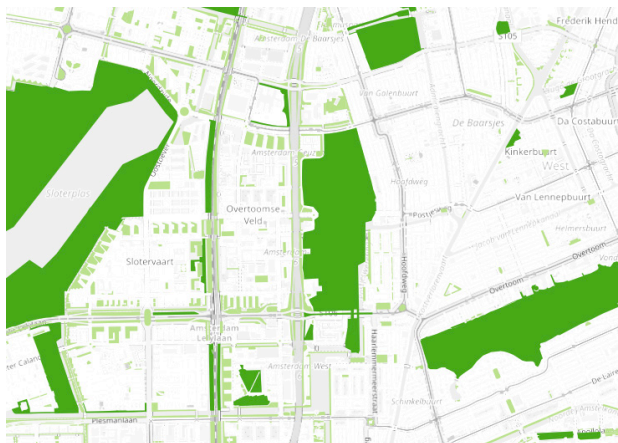
street

neighborhood

city

country

world



source: OpenStreetMap; location: Amsterdam West, The Netherlands

# Satellite imagery

## Principle

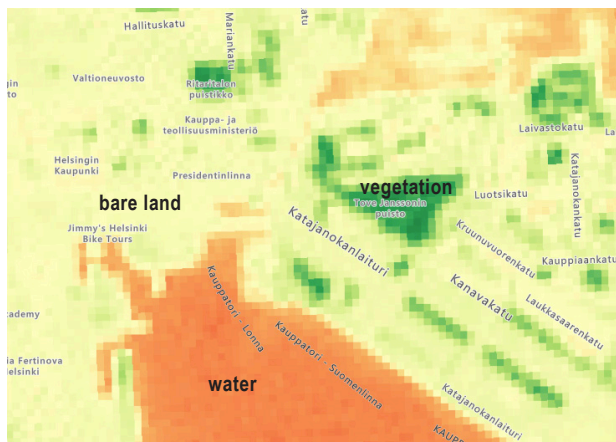
Vegetation health,  
on a scale from 0 to 1

## Data from

EU or NASA satellites

## Scale

street neighborhood city country world



source: Sentinel-2, [planetarycomputer.microsoft.com](http://planetarycomputer.microsoft.com); location: Helsinki, Finland

# Street-level imagery

## Principle

Greenery recognised in street-level imagery

## Data from

Google Street View or alternatives

## Scale

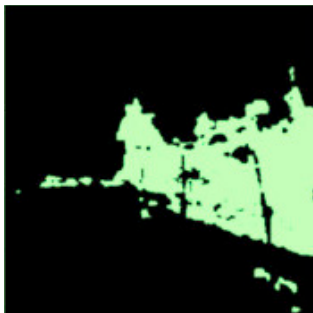
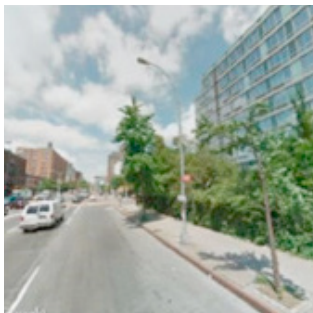
street

neighborhood

city

country

world



source: adapted from X. Li et al. / Urban Forestry & Urban Greening 14 (2015) 675-685

# 'Bluespaces'

## Principle

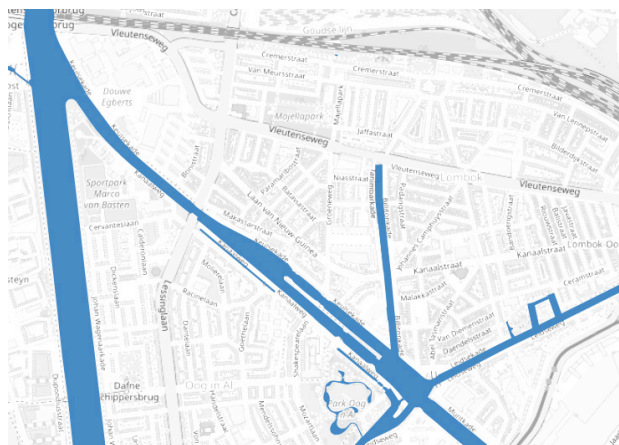
Areas considered 'dominated by water', per type or size

## Data from

(Local) governments,  
Urban Atlas (EU),  
or OpenStreetMap

## Scale

street neighborhood city country world



source: OpenStreetMap; location: Utrecht West, The Netherlands

# Houses

## Principle

Buildings meant for living

## Data from

(Local) governments  
(or OpenStreetMap)

## Scale

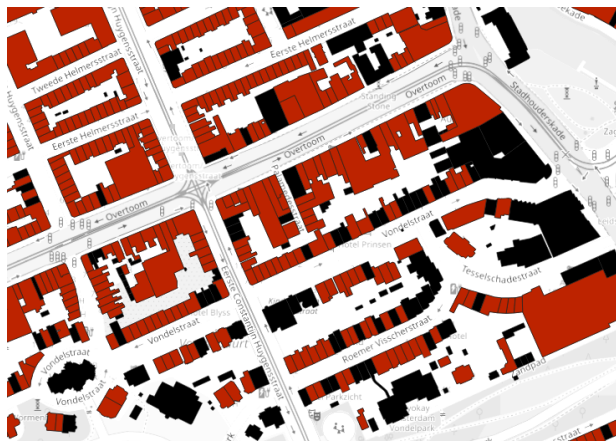
street

neighborhood

city

country

world



source: Basisregistratie Adressen en Gebouwen (BAG); location: Amsterdam West, The Netherlands

# Schools

## Principle

Educational buildings,  
per type or age group

## Data from

(Local) governments  
(or OpenStreetMap)

## Scale

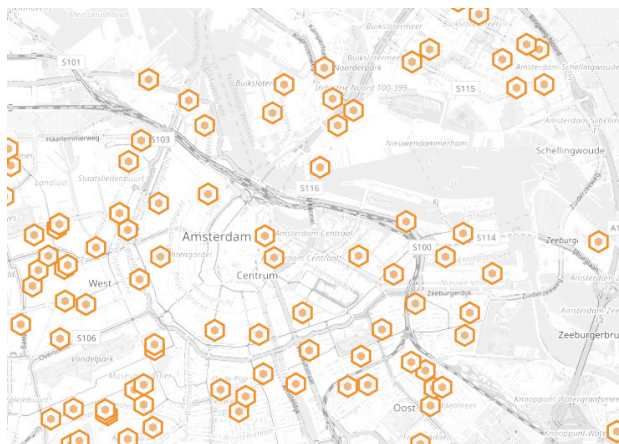
street

neighborhood

city

country

world



source: Dienst Uitvoering Onderwijs (DUO); location: Amsterdam, The Netherlands

# Playspaces

## Principle

Places considered 'playgrounds'

## Data from

Local governments,  
or OpenStreetMap

## Scale

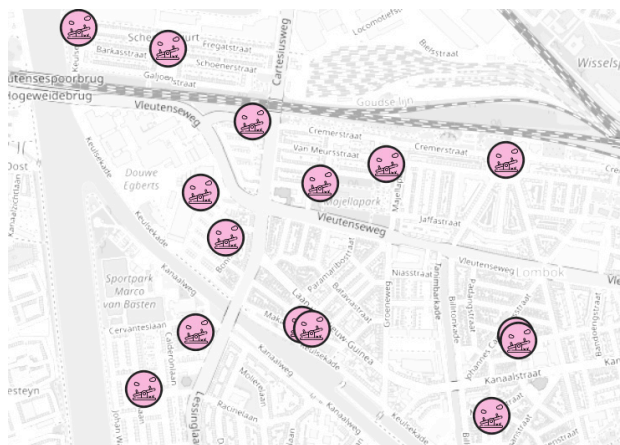
street

neighborhood

city

country

world



source: OpenStreetMap; location: Utrecht West, The Netherlands

# Neighborhoods

## Principle

Administrative neighborhoods,  
with population demographics  
(age/gender/socio-economics/..)

## Data from

(Local) governments

## Scale

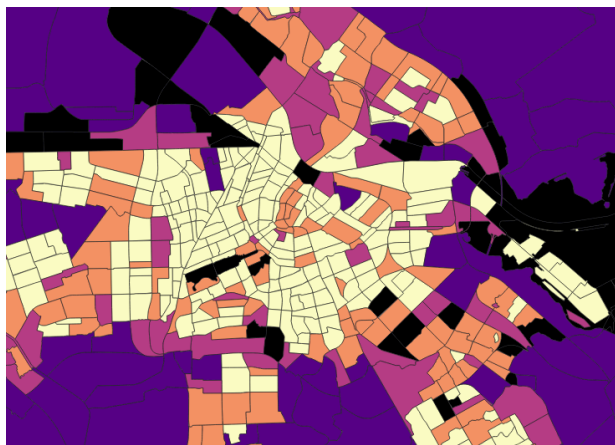
street

neighborhood

city

country

world



source: Centraal Bureau voor de Statistiek (CBS); location: Amsterdam, The Netherlands



# Pedestrian streets

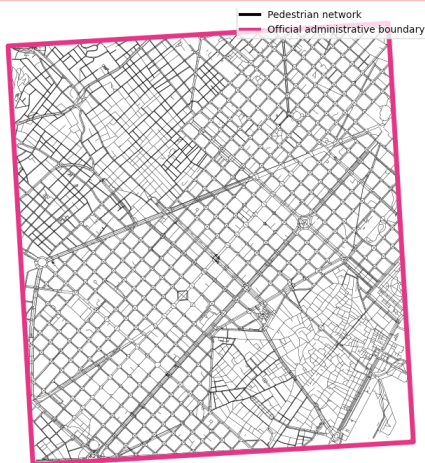
## Principle

Streets allowing pedestrians, some with sidewalks

## Data from

OpenStreetMap

## Scale



source: OpenStreetMap; location: Barcelona Eixample, Spain

# Bicycle streets

## Principle

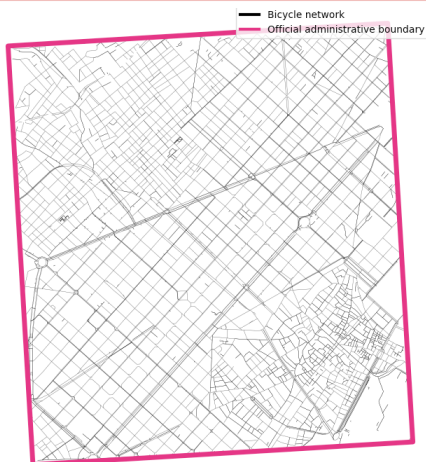
Streets allowing bicyclists, some with dedicated bike paths

## Data from

OpenStreetMap

## Scale

street neighborhood city country world



source: OpenStreetMap; location: Barcelona Eixample, Spain

# Traffic & railways

## Principle

Main streets and railways  
per type

## Data from

(Local) governments,  
or OpenStreetMap

## Scale

street

neighborhood

city

country

world



source: OpenStreetMap; location: Utrecht West, The Netherlands

# Sidewalk space

## Principle

Space on sidewalks and pedestrian areas

## Data from

(Local) governments

## Scale

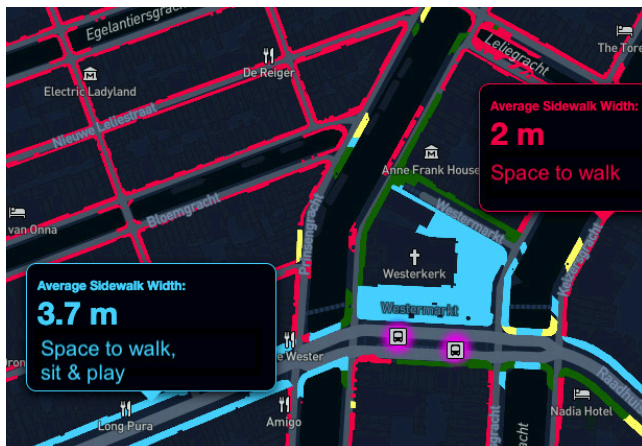
street

neighborhood

city

country

world



source: adapted from [social-glass.tudelft.nl/social-distancing/](https://social-glass.tudelft.nl/social-distancing/) ; location: Amsterdam Center, The Netherlands

# Citizens' perceptions

## Principle

Citizens' judgments of greenness in their neighborhood

## Data from

Surveys filled by a subset of citizens

## Scale

street

neighborhood

city

country

world

*"How would you describe your*  
*- neighborhood*  
*- street*  
*- window view*  
*in terms of **green and blue space?**"*

*"How **often** do you visit..."*

*"How much **time** do you spend..."*

# Visual perceptions

## Principle

People's judgment of greenness in images of places

## Data from

Online surveys with street-level imagery (for example, from Google Street View)

## Scale

street

neighborhood

city

country

world

**“I find this place [fairly] vegetated”**



*because*

*“I find this place ...”*

*“it looks like a ...”*

*“it has lots of ...”*

source: adapted from R. Teeuwen et al. / Landscape and Urban Planning 245 (2024)

# Expert audits

## Principle

Experts' judgment on certain public space indicators

## Data from

Field work

## Scale

street

neighborhood

city

country

world

### 10 HEALTHY STREETS INDICATORS



benches  
gardens  
parks  
footpaths  
shade  
trees  
.....

source: adapted from © Lucy Saunders, [healthystreets.com](http://healthystreets.com)

# Children's voices

## Principle

Children's thoughts on their home environment

## Data from

[example] Photovoice, photos made and discussed by children

## Scale

street

neighborhood

city

country

world



source: adapted from T. A. Abma & J. Schrijver / Educational Action Research 28:3 (2020) 405-426



JOKER



# Something else!

