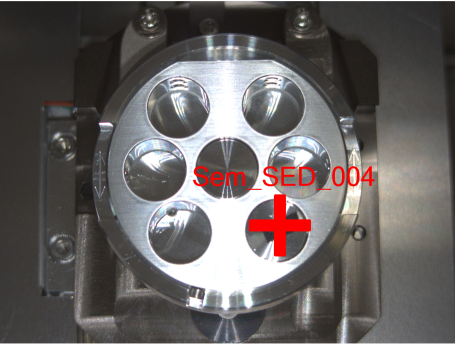
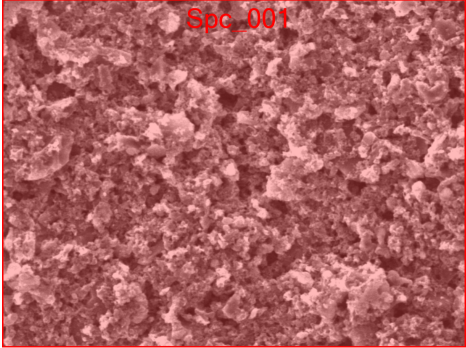


Smp_02

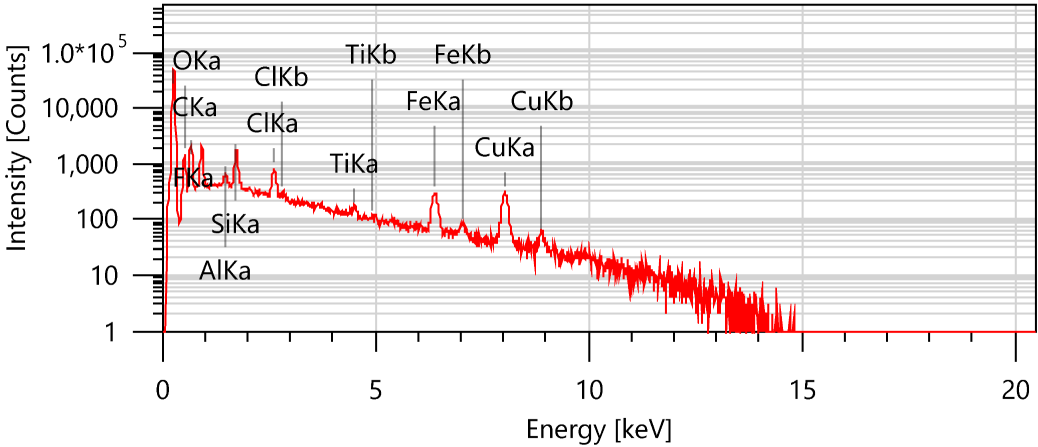


20 mm

Sem_SED_004



20 μm



Signal SED
Landing Voltage 15.0 kV
WD 9.9 mm
Magnification x800
Vacuum Mode HighVacuum

Items	Value
measurement conditions	
Acceleration voltage	15.00 kV
Probe current	-
Magnification	x 800
Process time	T3
Measurement detector	First
Live time	30.00 seconds
Real time	32.28 seconds
Dead time	7.00 %
Count rate	15927.00 CPS

Display name	Standard data	Quantification method	Result Type
Spc_001	Standardless	ZAF	Metal

Element	Line	Mass%	Atom%
C	K	82.86±0.12	90.64±0.13
O	K	6.14±0.09	5.05±0.07
F	K	3.30±0.05	2.28±0.04
Al	K	0.15±0.01	0.07±0.00
Si	K	0.97±0.02	0.45±0.01
Cl	K	0.56±0.01	0.21±0.01
Ti	K	0.12±0.01	0.03±0.00
Fe	K	1.57±0.05	0.37±0.01
Cu	K	4.33±0.12	0.90±0.03
Total		100.00	100.00
Spc_001		Fitting ratio 0.0075	